

Pioneer Expert Post-processing System

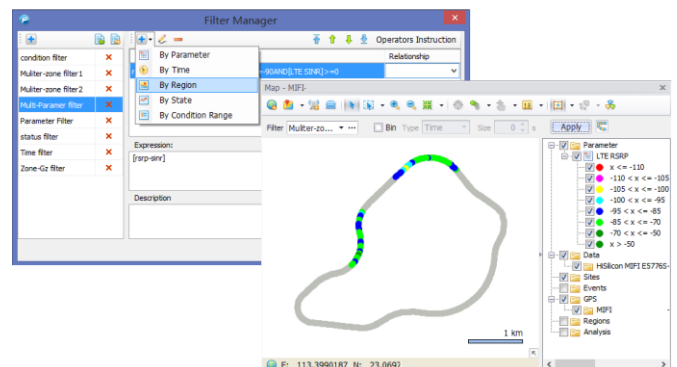
Pilot Pioneer Expert is a dedicated data analysis and reporting solution supporting GSM/CDMA/WCDMA/TD-SCDMA/TDD-LTE/FDD-LTE/LTE-A network technologies. It is an optional post processing module that can be offered together with Pilot Pioneer or as a standalone product. Pilot Pioneer Expert powerful data processing and analysis capability help to accelerate network performance and Quality of Service (QoS) evaluation. The integrated data presentation options, analysis methods, and statistical reports help to locate potential network problems, for necessary action on the network optimization activities. Pilot Pioneer Expert supports large volume data processing, various analysis functions, user-defined KPIs, and filtering functions to allow flexible data analysis.

Dingli Portfolio Data Analysis

Pilot Pioneer Expert supports analysis of test data collected by all Dingli's Data Collection portfolio, including Pilot Pioneer (data collection module), Pilot Walktour (Android/iOS), Pilot RCU/RCU Light, and Pilot Scout. Pilot Pioneer Expert may share test data with Pilot Fleet Unify and provide comprehensive analysis solution for customers.

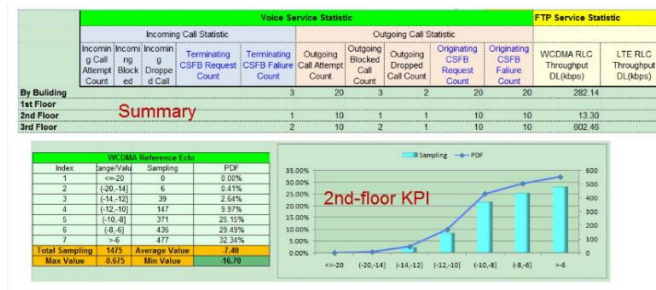
Comprehensive Filter Function

Pilot Pioneer Expert supports comprehensive and flexible filter function that may help users to quickly obtain required information from large volume of data and thus improves data analysis efficiency. Users may filter data by parameter, time, region, state, and combined conditions as required. The filtered data can be replayed and used for statistics generation and analysis.



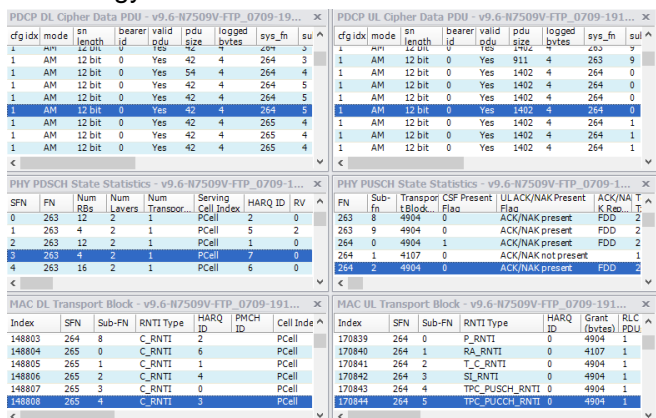
Indoor Test Management and Statistics Report

Pilot Pioneer Expert supports indoor test management functions, including indoor test building management, log file management, and statistics reports generation. This way, test management and data analysis are integrated to improve the data statistics and analysis efficiency.



Presentation of Frame Decoding Details

Decoding details of each frame in PHY, MAC, and PDCP layers can be displayed for LTE network technology.



Cell Line Linking Display

This function is used to display the cell line linking between measurement samples and related serving cells after importing data files and cell sites into the Map window, which helps users to analyze the cell coverage. There are three kinds of cell line linking: Cell line linking by cell, cell line linking by region, and cell line linking by log.

Various Data Presentation Modes

Various maps such as Satellite Maps, Google Maps, Bing Maps, Mapinfo are supported for data display and analysis. Test data can be displayed in and synchronized to Map window, Event window, Message window, Table window, etc., which helps users to conduct comprehensive analysis.

Flexible Analysis Functions

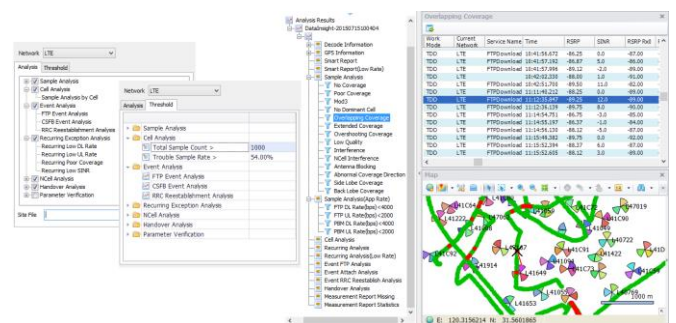
Various analysis functions are supported, including

- Coverage Rate Analysis
- Overlapping Coverage Analysis
- Mod3 Analysis
- Pilot Pollution Analysis
- Cell Statistics and Analysis
- MO/MT Union Analysis
- Delay Analysis
- Extended Coverage Analysis
- Antenna Feeder Reversed Analysis

All these analysis functions help users to quickly identify potential network problems and affected areas, while improving operational efficiency and cost.

Data Insight Analysis Function

Based on test data and cell site files, Data Insight is used to locate problems for LTE network technology by analyzing measurement samples, events, parameters, etc. Users may set different analysis conditions for different network technologies and filter analysis results to preliminarily locate problems on cells, neighbor cells, events, handover, parameters, etc. The analysis results can be displayed by Table and Map.



Flexible and Customized Statistical Report Function

Pilot Pioneer Expert provides flexible and customized statistical report functions. Users may customize the required parameters and easy-to-operate report template, which significantly improves report efficiency. Pilot Pioneer Expert supports multi-dimensional statistics reports for LTE/WCDMA/GSM technology and Scanner test, including Scanner report, VoLTE voice report, Benchmarking Report, Speedtest Report, Indoor Measurement Report, etc. The statistics results can be exported to MS Excel or MS Word format.